

# Print Quality Services



## About us:

FPIinnovations® Print Quality Services is a well-recognized scientific laboratory offering a wide range of knowledge, equipment, and expertise to the Paper and Printing industries. Every year paper companies, pressrooms, and printing suppliers take advantage of our unique services to resolve print quality problems and to support new product development.

We invest in the future of the printing industry by conducting fundamental research aimed at helping tackle the most difficult problems of our customers.

## Customer feedback:

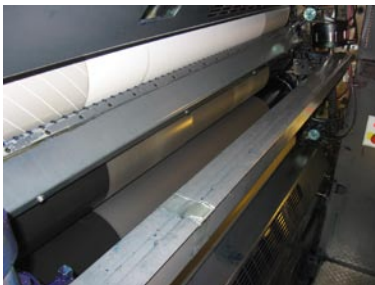
“We have been using FPIinnovations printing services for many years. Their testing facilities, combined with their expertise in print quality and pressroom operation, has helped us resolve numerous difficult print quality and pressroom performance issues for our commercial printing grades.”

*Richard Lefebvre, Eng. M.Sc.  
Director – Technical Services  
Commercial Printing Papers Group, AbitibiBowater*

## Some of our unique solutions:

- ✓ **Non-image area linting**  
Linting and Piling (LP) Test measures the non-image area linting propensity of paper over a large surface area.
- ✓ **Image area linting**  
Our Lint Test estimates the image area linting propensity of paper under controlled laboratory conditions.
- ✓ **Amount of lint on printing blanket**  
PapTapePull Test quantifies the amount of lint material on the offset press blanket.
- ✓ **Print Mottle**  
*Print Mottle Index* quantifies the print non-uniformity (mottle) taking into account customer perception.
- ✓ **Disturbing marks on the print**  
Fingerprinting analysis determines the intensity of periodic marks on paper surfaces and allows us to find their root causes on the paper machine.

## The World’s Largest Forest Product Institute at Your Service!

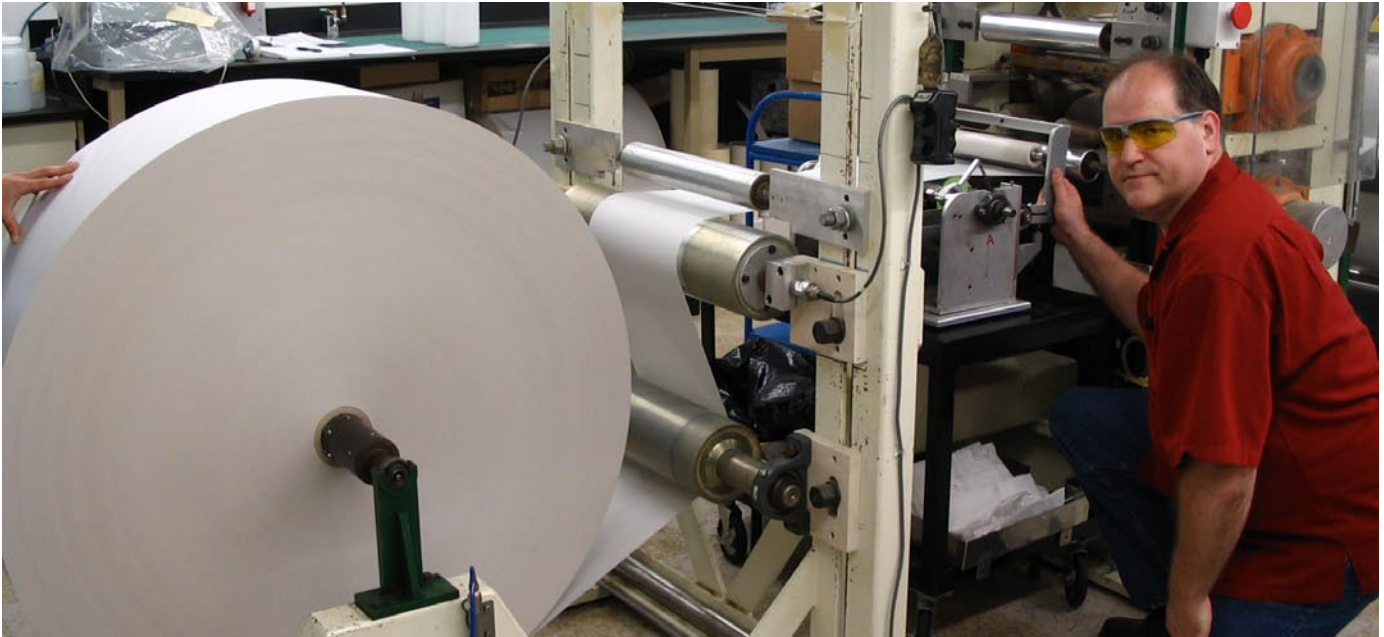


Have Print Quality Issues  
Such As Linting?



**Contact us**





**LP Tester in operation**

**Our expertise:**

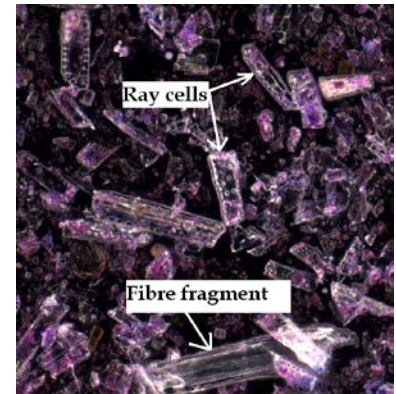
- Linting and piling
- Print-through  
Set-off  
Rub-off
- Poor ink coverage (speckle)
- Print mottle
- Missing dots
- Gloss development and uniformity
- Ink and fountain solution issues
- Paper surface defects and marks
- Press and blanket contamination analysis
- and more

**At your service:**

- Laboratory printing presses such as IGT A1C2-5, Prüfbau, IGT F1
- Lint testers such as: LP Tester, FPInnovations Lint Test, Domtar Lint Collector
- Microscopy: FE-SEM, light and fluorescence microscopes, confocal microscope
- Chemical analysis of printing supplies, paper additives
- Paper surface characterization: optical profilometers, contact angle tester, absorption tests
- Paper structure tests: mercury intrusion, sheet splitting, image analysis of microscopy data, FQA, micro-formation tests

**We assist with:**

- Pressroom trials (for example, trial design for lint collection or for print quality evaluation)



- Benchmarking and comparative testing
- Development of new testing methods
- Professional courses and training in your testing lab

When you need it, we combine our efforts and expertise with other research and development groups at FPInnovations. Among them are:

- |  |  |   |
|--|--|---|
| <ul style="list-style-type: none"> <li>• <b>Web and Roll Centre</b> <ul style="list-style-type: none"> <li>- web breaks</li> <li>- baggy edges</li> <li>- curl and dimensional stability</li> <li>- out-of-roundness of paper rolls</li> </ul> </li> </ul> | <ul style="list-style-type: none"> <li>• <b>Analytical Services and Standards</b></li> <li>• <b>Mechanical and Chemical Pulping</b></li> </ul> | <ul style="list-style-type: none"> <li>• <b>Pilot Paper Machine</b></li> <li>• <b>Environmental Services</b></li> </ul> |
|--|--|---|