

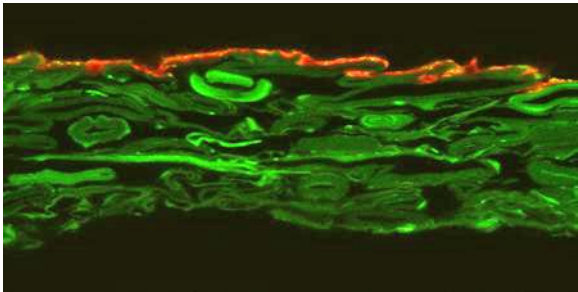
Unique Paper Analysis with State-of-the-Art Microscopy

Simultaneous visualization of paper, filler, coating, and ink interactions is a very difficult and time-consuming process when using traditional microscopy tools. Staining, embedding, or other manipulations increase the odds of changing the final composition of your sample.

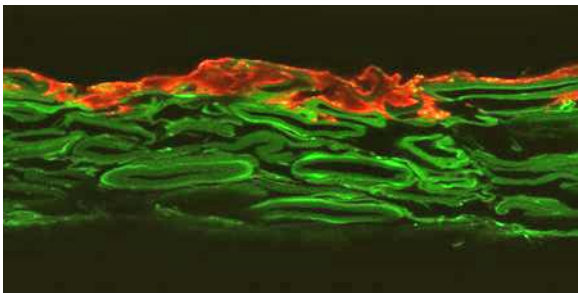
With EvalUTree®'s uniquely configured state-of-the-art multi-photon and confocal microscope, we are challenging traditional approaches by developing new rapid techniques requiring minimal sample preparation for 2- and 3-dimensional paper structure visualization and analysis.

Challenge – Inking Levels and Penetration

A paper manufacturer wanted to understand how different ink loadings interact with paper.



Low inking level



High inking level

Result

Rapidly captured images clearly showed ink penetration, providing the manufacturer insight into the paper and ink performance and enabling optimization of ink loading.

Contact:

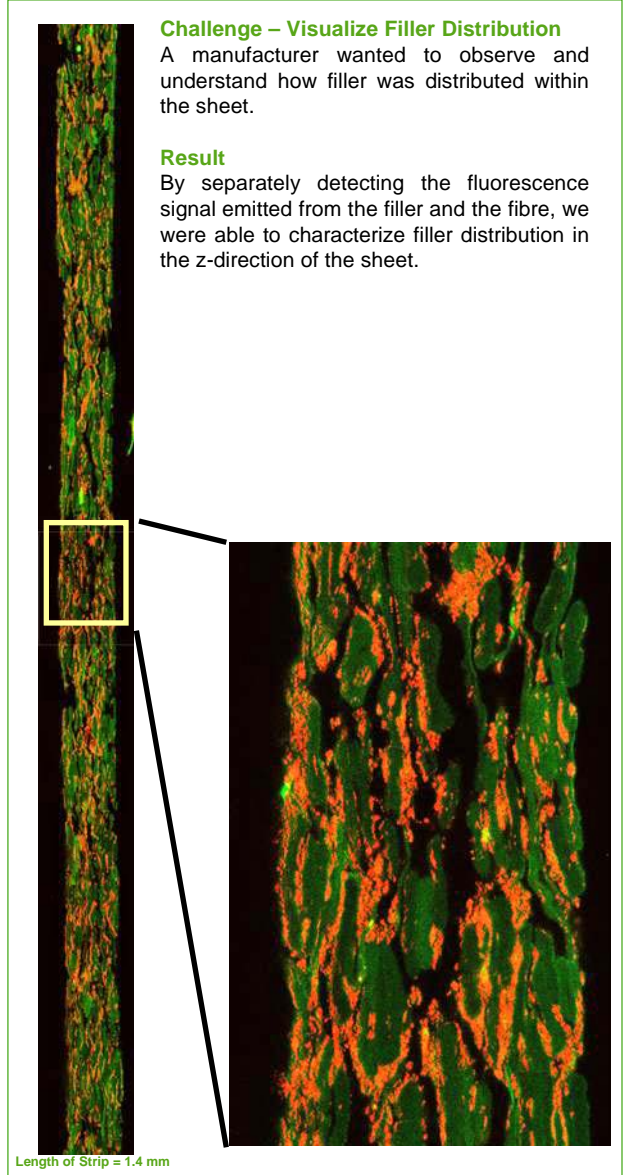
Ho Fan Jang
hofan.jang@fpinnovations.ca
T 604 222-3238

Challenge – Visualize Filler Distribution

A manufacturer wanted to observe and understand how filler was distributed within the sheet.

Result

By separately detecting the fluorescence signal emitted from the filler and the fibre, we were able to characterize filler distribution in the z-direction of the sheet.



Long, high-resolution paper cross-sections, with individual fibres, ink, and fillers clearly defined, can be readily generated, providing detailed analysis and statistical information. These powerful state-of-the-art tools, now offered by EvalUTree™, can help you understand your paper products.

www.evalutree.com

© FPInnovations, its marks and logos are registered trademarks of FPInnovations

Our Partners:

