

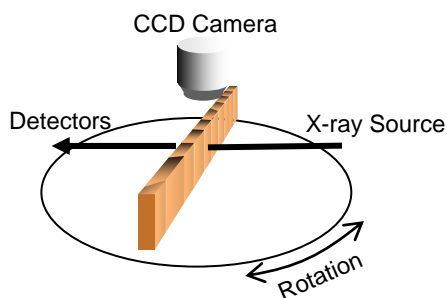
## SilviScan – Cost-Effective Measurement of Industrially Important Wood Properties

SilviScan provides pith-to-bark measurements of fibre width, wood density, and microfibril angle. From these data, other properties such as fibre wall thickness, coarseness, and wood stiffness can be estimated.

SilviScan provides a quick and non-destructive way to determine the optimum end use of wood. The results can be used to correlate wood and fibre properties and end product performance in solid wood, and pulp and paper.



The instrument automatically analyzes a 2-mm-wide wood sample using a unique combination of optical microscopy, image analysis, x-ray densitometry, and x-ray diffractometry.

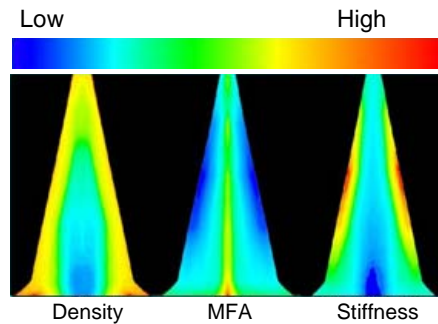


[www.evalutree.com](http://www.evalutree.com)

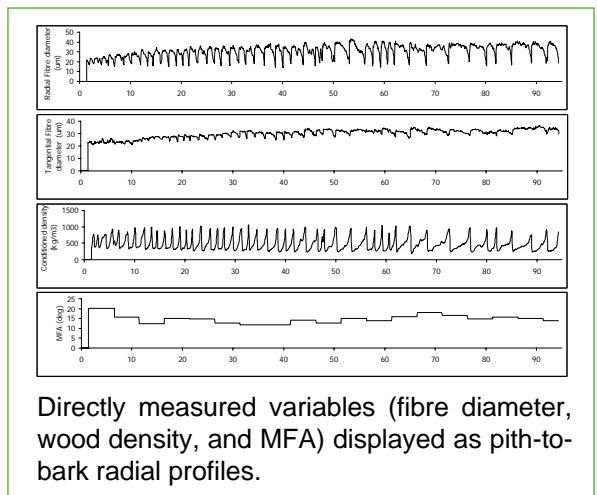
**Contact:**

Maurice Defo  
maurice.defo@fpinnovations.ca  
T 604 222-3206

Nelson Uy  
nelson.uy@fpinnovations.ca  
T 604 222-3200 #333



Measured and estimated properties throughout the tree can then be mapped for single or multiple trees depending on the sampling plan.



Directly measured variables (fibre diameter, wood density, and MFA) displayed as pith-to-bark radial profiles.

SilviScan data have many applications including:

- Wood quality for value-added products
- Site/wood quality interactions
- Wood quality-based silviculture prescriptions
- Climate change monitoring

We would be happy to discuss your specific wood quality information needs.



© FPInnovations, its marks and logos are registered trademarks of FPInnovations

**Our Partners:**

