

## Microscopy – Imaging and Analysis

Making the most of your raw material requires in-depth knowledge. We use state-of-the-art microscopy tools to examine and image your samples, and provide insights into structures and properties ranging from macro to nano. More importantly, we are specialists in wood and wood fibre. Anyone can take a picture, but it takes knowledge and expertise to understand what it means.

Our facilities include:

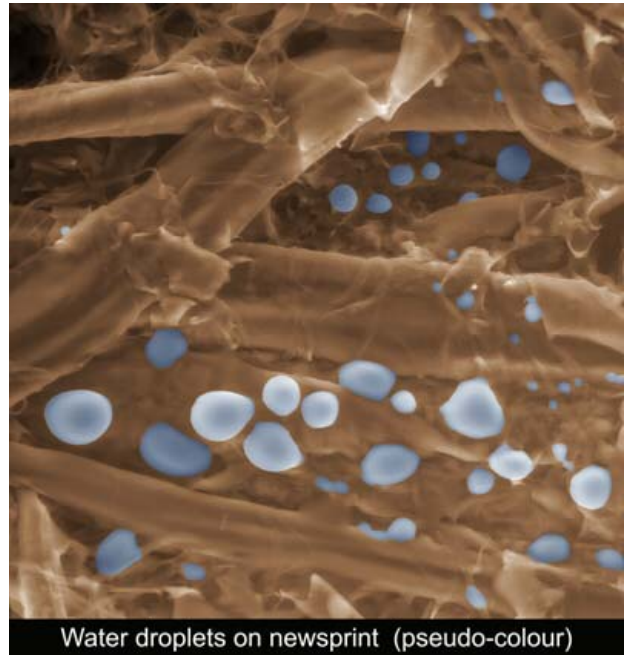
Light microscopy and digital imaging

State-of-the-art field emission environmental scanning electron microscopy (ESEM) and x-ray spectrometry

- imaging of uncoated biological samples
- can image dry or wet samples – even liquid water
- moisture-cycling experiments
- cooling, heating, and 200N micro-tensile stages

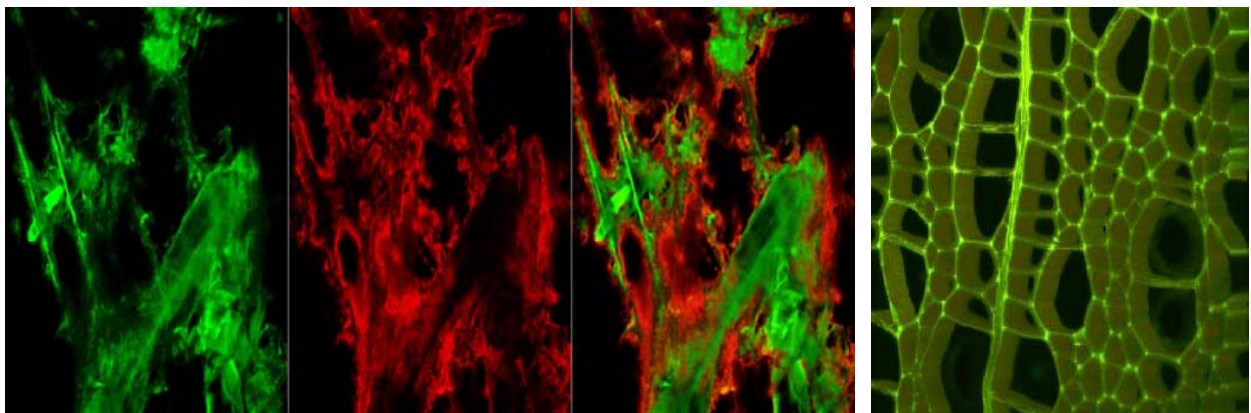
Latest-generation confocal and multiphoton microscopy and image analysis

- optical sectioning
- 3-D imaging
- multi-channel detection – enables mapping of sample based on spectral response



Water droplets on newsprint (pseudo-colour)

Talk to a microscopy specialist at EvalUTree® to learn more about our advanced imaging technologies and how they can help you.



Paper signal

Ink signal

Combined signal

Hardwood structure – 3D

**Contact:**

HoFan Jang  
hofan.jang@fpinnovations.ca  
T 604 222-3238

James Drummond  
james.drummond@fpinnovations.ca  
T 604 222-3200 #356

[www.evalutree.com](http://www.evalutree.com)

© FPInnovations, its marks and logos are registered trademarks of FPInnovations

**Our Partners:**

